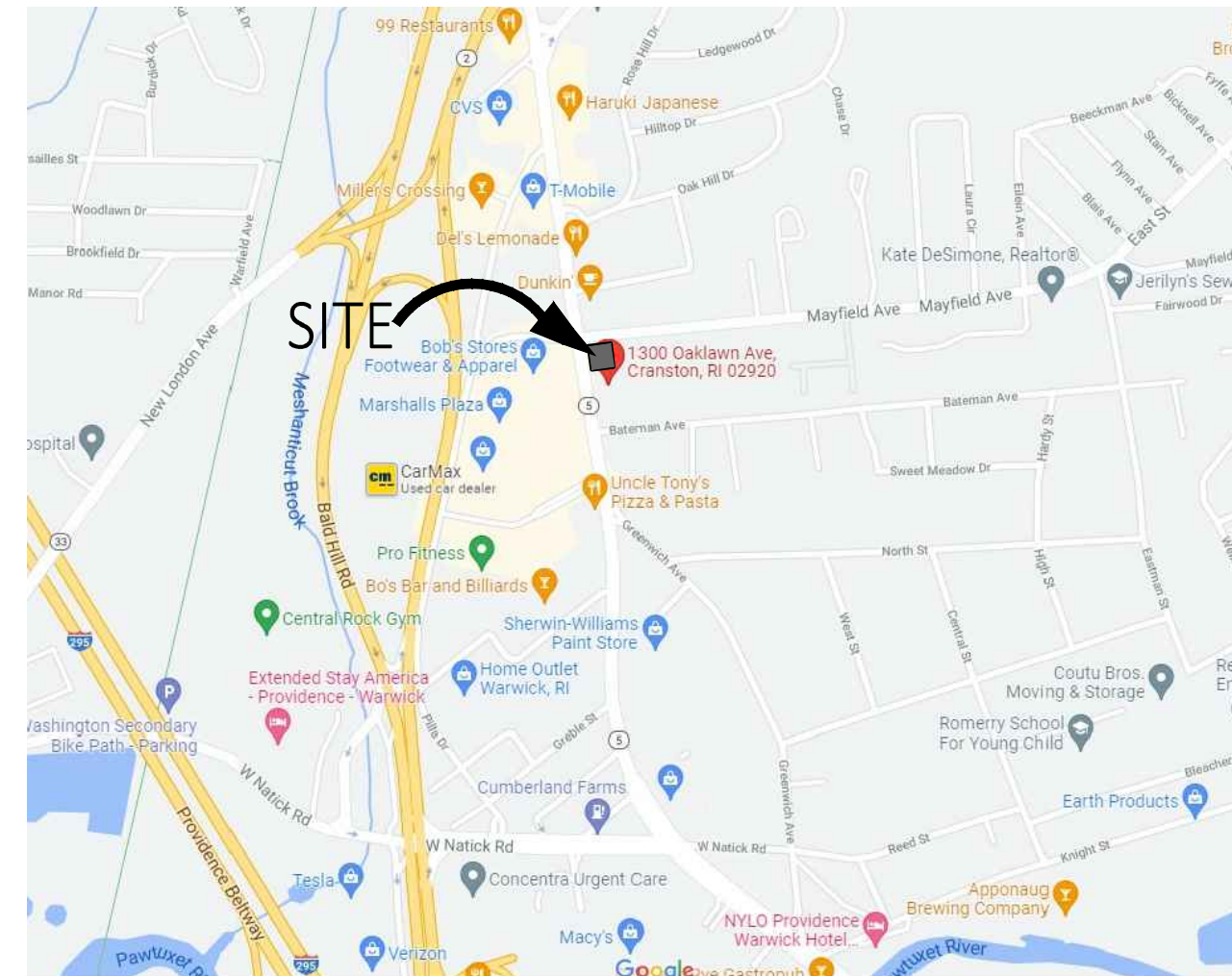
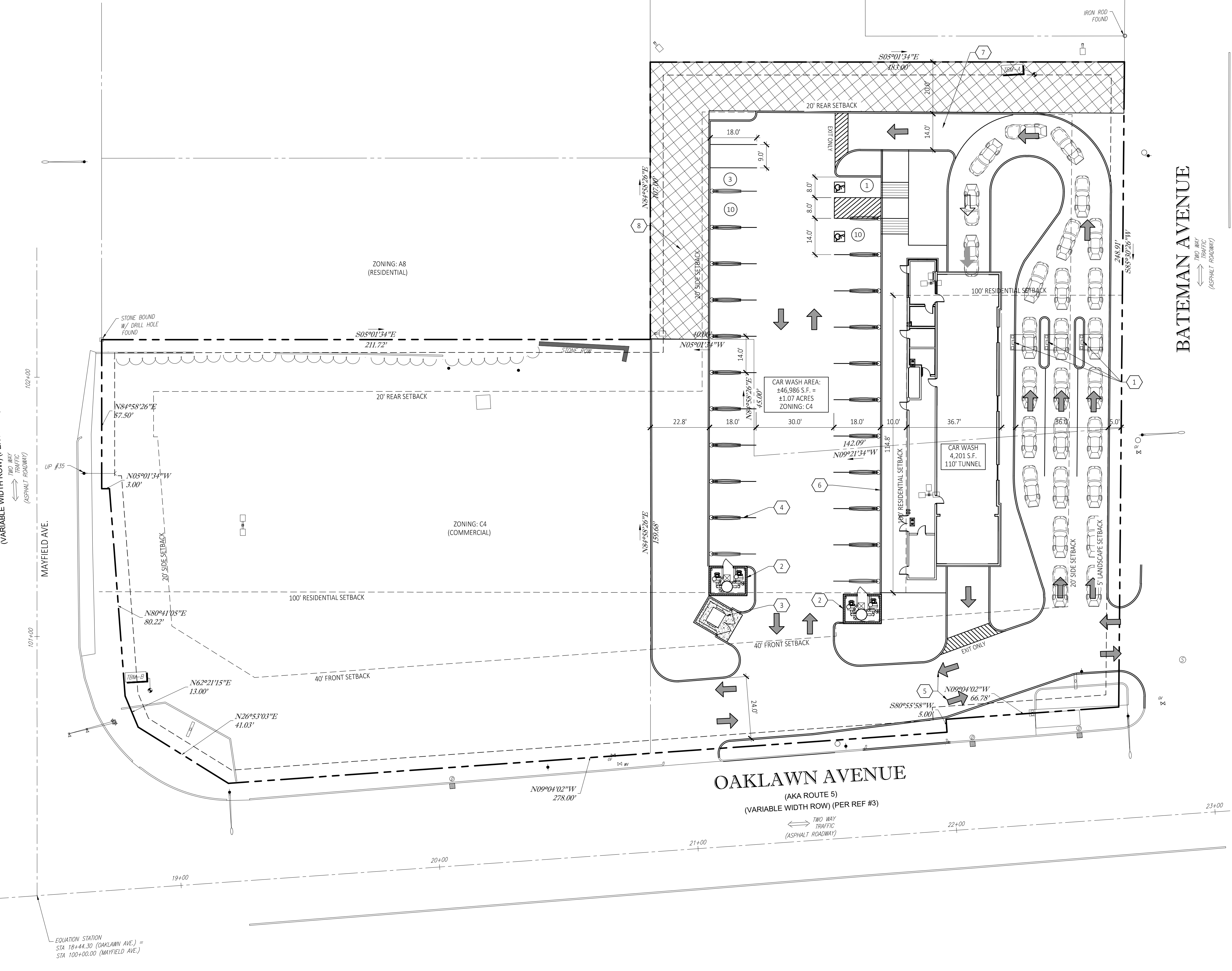


FILE NAME: \\Share\clients\Steeley\Washville\Cranston\10-072-Rev2\with surveying.dwg LAST SAVED BY: Vanderheke, Michael SAVED DATE: 1/25/2022 12:14 PM PLOTTED: 1/25/2022 12:16 PM

MAYFIELD AVENUE
(VARIABLE WIDTH ROW) (PER REF #3)

CONCEPT SITE PLAN - OPTION 2
SCALE: 1" = 20'-0"



LOCATION MAP
SCALE: NTS

SITE DEVELOPMENT DATA: CAR WASH

SITE ADDRESS	1300-1312 OAKLAWN AVE.
ZONING	C4: HIGHWAY BUSINESS (PERMITTED USE)
SITE AREA	±46,986 S.F. (±1.07 ACRES)
PARKING	VACUUM SPACES: 20 (1 BARRIER-FREE SPACE) BARRIER-FREE SPACES: 2 (1 VACUUM SPACE) EMPLOYEE SPACES: 3
STACKING	LANES: 3 CARS: 16
LANDSCAPE	14,761 S.F. = 28%
BUILDING AREA	4,201 S.F.
TUNNEL LENGTH	110'

PROPOSED SITE IMPROVEMENTS

1	PAY STATIONS.
2	VACUUM PRODUCER.
3	TRASH ENCLOSURE.
4	VACUUM STANCHION.
5	PAVEMENT ARROW.
6	CONCRETE SIDEWALK.
7	ESCAPE LANE.
8	LANDSCAPE SCREENING.

sevan
ENGINEERING

Regional Office:
37704 Hills Tech Drive
Farmington Hills, MI 48331
734.367.4445 Telephone

Corporate Office:
3025 Highland Parkway, Suite 850
Downers Grove, IL 60515
Info@sevasolutions.com www.sevasolutions.com

INTEGRITY | RESPECT | TEAMWORK | EXCELLENCE | CHARITY

REVISIONS

NO.	DATE	DESCRIPTION
0	12.03.2021	CLIENT REVIEW
1	01.18.2022	CLIENT REVIEW
2	01.24.2022	PRELIMINARY SITE PLAN

CONSULTANT

SEAL

CUSTOMER

Washville
Your Hometown Car Wash

PROJECT DESCRIPTION

WASHVILLE CARWASH

PROJECT LOCATION

1300-1310 OAKLAWN AVE. CRANSTON, RI 02920
(PROVIDENCE COUNTY)

SHEET TITLE

CONCEPT SITE PLAN OPTION 2

SHEET MANAGEMENT

PROJECT NO.:
DATE:
CRITERIA:
PROJECT MANAGER: T. KRATZ

THIS DOCUMENT IS AND SHALL REMAIN THE PROPERTY OF SEVAN MULTI-SITE SOLUTIONS, INC. REPRODUCTION OR ALTERATION OF THIS DOCUMENT WITHOUT THE EXPRESSED WRITTEN PERMISSION OF SEVAN MULTI-SITE SOLUTIONS, INC. IS PROHIBITED. (NOT REPRODUCIBLE - ALL RIGHTS RESERVED) COPYRIGHT © SEVAN MULTI-SITE SOLUTIONS, INC. 2021

SHEET NUMBER

CP1.20